

# Connecting Threads

Handweavers Guild of Boise Valley  
September, 2024



## September Program: Extended Show and Tell

Welcome Back Everyone! I am excited for all of us to gather once again over our common love of fiber arts. This month's program is going to be an Extended Show and Tell. Many of us participated in the Tour de Fleece, entered into the county fairs, traveled to amazing places, or just spent the Summer months spinning and weaving away. Bring any handmade items, photos, or really anything cool you want to the meeting, and we can set up tables for everyone to show off how we all spent our Summer!

❖ Jenné Schiffhauer, Vice President, Program Coordinator

## Calendar of Events

### **Regular Meeting:**

September 7, 2024 ~ 11:30 a.m.

### **Program ~ Extended Show & Tell**

At the First Congregational Church of Christ,  
2201 Woodlawn, Boise, in the Banquet Room

Next meeting - October 5, 2024

### **Board Meeting:**

There will be no board meeting in September. The next regular board meeting will be November 2, at 10:00 before the regular Guild meeting at the Church.

### **Study Groups:**

Sept. 4, 2024 ~ Spinning Study Group

11:00 a.m. to 2 p.m. ~ At Rubaiyat Bookstore,  
314 S 6th Ave, in Caldwell

Sept. 12, 2024 ~ Beginning Weaving Study Group

6:00 p.m. ~ At the home of Sherry Bittner

Sept. 10, 2024 ~ Lace Study Group

10:00 a.m. - 12 p.m.

At the home of Raelene Viste

Sept. 17, 2024 ~ Day Weaving Study Group

10:30 a.m. ~ At the home of Jenni Jimmerson

Sept. 19, 2024 ~ Tapestry Study Group

7 p.m. ~ At the home of Kelly Sandusky

October 29, 2024 ~ Garment Study Group

10:30 a.m. ~ At Lunatic Fringe Yarns

### **Workshops:**

October 25 - 27, 2024 - Shadow Weave

November 9&10, 2024 - Beginning Weaving Clinic

April 11 - 13, 2025 - Wedge Weaving, with  
Connie Lippert

### **Community Events:**

September 28th & 29th - Renaissance Fair

September 29th - Old Farm Days.

October 5th & 6th - Renaissance Fair, Part 2



## Workshop: Shadow Weave: The Multifaceted Structure

.....With Rebecca Winter is on October 25, 26 & 27, 2024. There are still a few spaces left, so send your check soon to secure your space. Cost for this spectacular workshop is \$130.00 which includes the materials fee.

❖ Jenni Jimmerson, Vice President, Workshop Coordinator

## 2024-2025 Guild Programs

September - Extended Show and Tell

October - Rebecca Winter: Complex Weavers Seminars Keynote

November - Mary Berent: Borders (Intensive Topic)

December - Holiday Potluck / Let's Talk About ANWG

January - Mini Workshops

❖ Jenné Schiffhauer, Vice President, Program Coordinator

February - Fashion Show

March - Vila Cox: TBA

April - Katzy Luhring: Color Theory

May - Equipment Sale

June - End of Year Potluck



## President's Corner

I hope everyone had a great summer, despite the hot temperatures and smokey skies. I usually get a lot of weaving done in my summer hibernation months!

I'm sure everyone is ready for a busy and productive year of Guild activities. Our Vice-Presidents have been very busy planning workshops and programs for the upcoming year. Please remember that this wonderful Guild of ours runs on volunteer labor. All the officers and all the people who have volunteered to be chairs of committees spend their time making the Guild a fun experience for all of us. Give them a 'thank you' as the upcoming year unfolds with fun and interesting things to enjoy!

◆ Mary Berent, President

### 🎀 Beginning Weaving Clinic 🎀

**Date:** Nov 9-10, 2024, Saturday & Sunday, 8am-5pm

**Location:** City of Eagle Fire Station

**Planning Committee:**

Workshop Co-Chairs- Robin Conrads, Cindy Griewe

BWSG Co-Chairs- Jenné Schiffhauer, Marianne Poling

Workshop Mentor - Rebecca Winter

**Purpose:** To provide workshop space and time and mentorship for beginning weavers to experience a workshop that focuses on the basics of prepping and weaving on a loom, either rigid heddle or 4-shaft.

**Brief Description:** A two-day workshop that includes winding a warp, warping a loom, and weaving a project of "mug-rugs," using various treadlings or color variations to create different patterns in fabric. Opportunity to weave a set of "mug rugs" on one's own loom, and also opportunity to try the looms of others. Workshop fee will cover the printing of educational materials. Individual participants will bring their tools, loom, and prescribed project yarns.

**Cost:** Cost per individual will be the cost of the notebooks and included info

**Registration:** Registration Forms will be available for sign-ups to begin at the September meeting.

**Final day for Registration:** November 2 (by the end of the Guild Meeting)



Save the Date - April 11 - 13, 2025

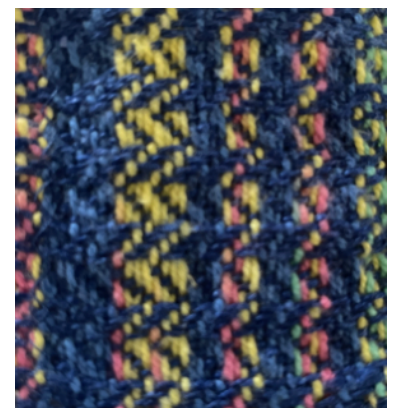
Wedge Weave Workshop  
by Connie Lippert

## September Sample Exchange

I'd like to thank Katzy Luhning for our sample this month. It's a warp and weft faced twill with warp stripes. She used 8/2 cotton in pastels for the warp and bold hemp in cobalt for the weft. I especially like how the hemp pops over the top of the cotton. If you've never tried using hemp you should grab your sample at the next meeting and give this pattern a try!

If you would like to share your talents with the guild I'd love to hear from you.

◆ Christie Farrin, Sample Chair





## **Study Groups:**

### **Spinning Study Group**

The spinning Study group is meeting Wednesday, September 4th, at 11-2. We are still at the Rubaiyat bookstore in Caldwell. The address is 314 S. 6th Ave. We look forward to seeing everyone!

- Jeannie Phillips, Study Group Chair

### **Lace Study Group**

The Lace Study Group will meet Tuesday, September 10th, from 10am to 12pm at Raelene Viste's. Making lace is not an absolute requirement for joining us.

- Vila Cox, Study Group Chair

### **Tapestry Study Group**

We will meet on September 19 at the home of Kelly Sandusky at 7pm.

- Kelly Sandusky, Study Group Chair

### **Day Weaving Study Group**

Day Weaving Study Group is meeting on September 17<sup>th</sup> at 10:30 at Jenni Jimmerson's home. We have had meetings through the summer and have had great attendance. Hope you can join us in September. Please contact Jenni with any questions.

- Jenni Jimmerson, Study Group Chair

### **Garment Study Group**

The next Garment Study group will be held on Tuesday, October 29<sup>th</sup>, at 10.30am. It will be held at Lunatic Fringe Yarns in Fruitland. Everyone is welcome. Please call Anne Oglevie if there are any questions.

- Anne Oglevie, Study Group Chair



## **Regular Meeting Minutes ~ June 1, 2024**

Call To Order at 11:31AM

- Present were 23 attendees: President Rebecca Winter, Treasurer Mitzi Meyers, Vice President Julie Gerrard, Secretary Dyan Lay, Membership Officer Cindy Griewe, Mary Berent, Hanna Meinikheim, Doug Ranck, Tasha Denegal, Jeannie Phillips, Sherry Bittner, Jean Zaske, Lisa Baker, Robin Conrads, Vila Cox, Brenda Hatch, Jessica Clipson, Mecinze Berg, Alyssa Bangs, Cheryl Wurtenberger, Jenné Schiffhauer, Katzy Luhning and Sarah Sherman.

Welcome and Introductions

- Welcome by Rebecca Winter and introductions included each attendee's name and favorite fruit.

Business

- No new business.

Show and Tell

- Mary Berent celebrated her 50<sup>th</sup> anniversary as a weaver but showing her first weaving piece from 1974, a twill table runner and a photo of her from that time.
- Cindy Griewe presented a needle-felted baskets of cute critters.
- Sherry Bittner showed a pressed petals stash buster knitting piece.
- Kelly Sandusky passed around four shaft, 5/2 cotton towels.
- Katzy Luhning displayed a variegated blue/purple hand cloths made of a weft and warp faced twill.
- Hanna Meinikheim brought origami cranes and flowers with mirror symmetry as well as a penguin knit ball.
- Jean Zaske made two table runners using overshot name drafts.



- Mitzi Meyers had a tell: that as a new weaver she called Mary Berent so many times and learned well from her.
- Brenda Hatch shared that she recently caught her limit in walleye.
- Cheryl Wurtenberger made a quilt out of many pairs of denim jeans, a blouse created by knitting machine and a ball of knitted strips.
- Rebecca Winter showed a six color, shadow weave runner of 5/2 cotton, and a thrum (waste yarn) weave wall hanging.

#### Announcements

- President
  - Rebecca Winter announced the button group show is next week.
- Treasurer
  - Mitzi Meyers reported that everything is fabulous, and all the bills are paid.
- Vice President
  - Julie Gerrard thanked Brenda Hatch setting up the annual potluck at her clubhouse.
  - She also thanked everyone that helped with workshops and program this year.
- Membership
  - Cindy Griewe announced that the Beginning Weaving Study Group will be holding a two-day clinic November 9-10. Participants will be making mug rugs, and the registration form is now available. This is a self-guided study clinic with mentors available. There is a cost of \$15, and the event will be held at the Eagle Fire House conference room.
  - She also let the attendees know that annual membership dues are due. She asks that everyone provided a current registration form with their payment.
- Sample Box Chair
  - Kelly Sandusky explained that Christie McFarrin will be taking over as Sample Box Chair, and she urged everyone to sign up for a month to provide a sample.
- Vila Cox announced that she will be presenting a July seminar for the Complex Weavers Guild. Vila invited our guild members to a seminar run-through on June 22 at 10:30AM at the Eagle Fire House.
- Mary Berent explained about the international Convergence convention in Wichita, Kansas this summer and lauded three of our guild's members – Vila Cox, Ivy DeHart and Rebecca Winter – who were all teaching seminars.

Meeting adjourned at 12:19PM, and everyone enjoyed the annual potluck.

- Respectfully submitted by Dyan Lay, Secretary



#### Officers

- President - Mary Berent
- Vice President - Jenné Schiffhauer
- Vice President - Jenni Jimmerson
- Secretary - Dyan Lay
- Treasurer - Kelly Sandusky
- Membership Officer - Cindy Griewe
- Past President - Rebecca Winter

#### Chairs

- Librarian - Sally Johnston
- Web Master - Robin Conrads, Dyan Lay
- Equipment - Vila Cox
- Newsletter Editor - Rebecca Winter
- Pat Ann Fund Administrator - Katzy Iuhring
- Sample Exchange - Christie Farrin
- Outreach Committee - Janet Stanger
- Social Media - Dyan Lay
- ANWG Representative - Connie Griffin
- Spinning Study Group - Jeannie Phillips
- Weaving Intensive Study Group - Rebecca Winter & Pat Dayton
- Day Weaving Study Group - Jenni Jimmerson
- Beginning Weaving Study Group - Sherry Bittner
- Garment Study Group - Anne Oglevie
- COE Study Group - Mary Berent
- Lace Study Group - Vila Cox
- Thursday Fiber Friends Zoom - Jinks Hunter
- Tapestry Study Group - Cindy Schaffer & Kelly Sandusky
- Tour de Fleece - Jinks Hunter
- Church of Christ Contact Person - Vila Cox
- Bowmont Church Contact Person - Rebecca Winter
- Eagle Fire Station #1 Contact Person - Julie Gerrard
- Fairview Terrace Community Center Contact Person - Brenda Hatch
- Post Office Box Name Holder - Mitzi Meyers
- Mail Collector - Mitzi Meyers

#### Website

<http://www.handweavers-guild-boise.org>

#### Mailing Address

PO Box 6258, Boise, ID 83707

