

Connecting Threads

Handweavers Guild of Boise Valley
September, 2021

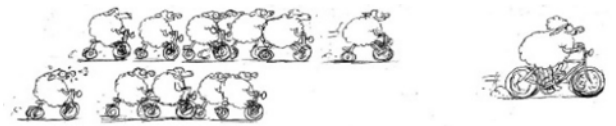
~ Come in Person to the Meeting ~ August 28, 2021 ~

The meeting will be held at the First Congregational Church of Christ, 2201 Woodlawn, Boise, in the Banquet Room. Masks required, per the church.
11:00 a.m. - Regular Meeting, Show-and-Tell, and

Program: Tour de Fleece 2021 Celebration

We had great participation in our Tour and the final results will be shared. Goodie bags and awards will be handed out. If you participated, please bring your project to show off.

Thanks everyone, for your participation and for sharing.



2021 - 2022 Membership

Our first regular meeting of the new Guild year is coming up on August 28 and I'm looking forward to seeing you all again! This will also be the perfect time to renew your membership if you haven't already done so. Dues are still \$30.

Now that we are starting to meet in person again there will be more photo opportunities. I'm asking that everyone please complete and sign the current photo release form when you renew. The 2021-2022 Membership/Photo Release Form is attached to this newsletter and is always available on the [HWGBV website](#).

Also, we ask you to send in your dues by October 15, if you would like to be included in the Directory and continue receiving Guild emails. The Directory will be distributed at the November meeting.

◆ Dagmar Rapp, Membership Officer

Doubleweave - Double Rainbow Workshop, by Jennifer Moore

Coming in November 2021!

This workshop will be delivered to you online via Zoom. The Zoom dates are:

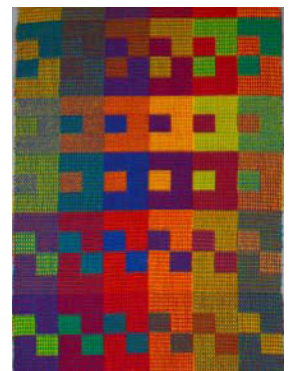
- Monday, November 8
- Thursday, November 11
- Monday, November 15
- Thursday, November 18

There is room for 20 participants. This format allows for you to use your floor loom at home and weave your sample between the classes. A video will be provided on how to wind and warp your loom 6 to 8 weeks before the class.

The cost of the workshop is \$150. **Send the workshop fee to hold your place in this workshop.**

Please contact Mary Berent or Connie Griffin for more information and to sign up.

◆ Mary Berent & Connie Griffin, Vice Presidents



Calendar of Events

August 28, 2021~

11:00 a.m. - Business Meeting, Show and Tell, & Tour de Fleece 2021 Celebration

At the First Congregational Church of Christ,
2201 Woodlawn, Boise, in the Banquet Room

~~~~~

September 21, 2021 -Day Weaving Study Group

10:30 a.m. ~ Location TBA

Spinning Study Group - Activities TBA

Every Thursday - Thursday Fiber Friends Zoom  
2:00 p.m. ~ Via Zoom

November 30, 2021 - Garment Study Group  
10:30 a.m. ~ At the home of Jenni Jimmerson

~~~~~

November 8, 11, 15, & 18, 2021 ~

Double Rainbow Workshop, by Jennifer Moore,
Delivered Via Zoom

~~~~~

## Handspun Yarn and Fiber Sale

### Pat Ann donated her entire collection of fiber and yarn to the Boise Guild!

Her collection of fiber, handspun yarn and commercial yarn will be available for sale at the August 28 regular meeting of the Guild. This is not leftovers, this is the entire collection of a fiber obsessed entrepreneur and it is beautiful! The fiber is all washed, mostly carded into roving. A lot of it was prepared at *Spinderella*, a boutique carding mill in Utah. Sheep breeds for sale are Merino, Rambouillet, Cormo, Corriedale, CVM and others. There is also some mohair, angora and alpaca. Most fiber is marked as to breed. There is fiber from Ralph Grosfma's flock and Whitefish Bay. There is a lot of colored fleece, particularly moorit and a smaller amount of dyed fiber. A total of about 225 pounds! It will be sold in whole bags as it came from Pat. Bags range in size from 6 pounds down to less than a pound with most bags in the 2 to 3 pound range. The price is the same for all fiber, \$15 per pound.

The handspun is all spun by Pat Ann, mostly natural colored, but some dyed. It ranges from lace weight to bulky, most of it is plied. Pat was a very talented spinner, so this is gorgeous yarn! There is about 125 pounds total! It will be sold in whole bags as it came from Pat. The price is the same for all handspun yarn, \$20 per pound.

The commercial yarns are a mix of things, cotton, wool and some synthetic. It is all \$5.00 per bag or cone. There are a few other miscellaneous items individually priced.

~~~~~

The sale will be held after the regular meeting and program, approximately **12:30 pm, Saturday, August 28.**

Payment by check or cash only. No cards can be accepted.

ALL proceeds go to the Handweavers Guild of Boise Valley.

◆Mary Berent, Chair



2021-2022 Proposed Programs and Workshops

September: Jinks Hunter, Tour de Fleece recap and sale of Pat Ann's collection

October: Jinks Hunter, Spinning Program

November: Cynthia Newman, Color in Weaving

Jennifer Moore, Weaving Workshop, Double Rainbow ZOOM Workshop

December: Christmas Pot Luck

January: Using Ravelry a ZOOM presentation

February: Raelene Viste, Lacemaking

March: Linda Morton-Keithley, Saddle Blanket Weaving

April: Fran Yuschak, Asian Textiles and Ikat Design

Cynthia Newman, Weaving Workshop, Color Compositions

May: Lynn Ruggles, Spinning Program

Lynn Ruggles, Spinning Workshop, Understanding Twist

June: Picnic and Yarn and Equipment Sale

♦ Mary Berent & Connie Griffin, Vice Presidents



Demonstration Opportunity - Old Farm Day

We have been asked again to demonstrate our skills at the Old Time Farm Day at the Schick-Ostolasa Farmstead on **Sunday September 26th from 12:00pm-4:00pm**. The Farmstead is located at 5006 W. Farm Court Boise ID 83714 (in the Hidden Springs subdivision).

Other demonstrators include the Dry Creek Quilters, Blacksmith-Scott Webster, the Fort Boise Garrison Living History Volunteers, Smarty Pants actors, and The False Bottom String Band. There are children's games and food will be provided by The Dry Creek Mercantile. Proceeds go to support and restore The Farmstead which is owned by Ada County and managed by the Dry Creek Historical Society. Schick-Ostolasa Farmstead. Find more information at <https://www.drycreekhistory.org>

I will be there spinning. I have done this for the past seven years. It is fun time and the silent auction and dessert auction gave great items. Demonstrators get in free and lunch is provided. Come demonstrate your pioneer skill. The only request is to wear period clothing.

Please **let me know** if you have any questions and **if you are going to demonstrate** your skill so I can get your name on the list.

♦ Janet Stanger Outreach Chair, 208-600-4724.



Day Weaving Study Group

Day Weaving Group will be meeting September 21 at 10:30. The location will be announced prior to this date. Watch our groups.io for this information.

♦ Greta Ankeny, Study Group Chair

Garment Study Group

The Garment Study group's next meeting is November 30 at 10:30. We will be meeting at Jenni Jimmerson's home. With this date so far out everyone has time to finish a garment, or get one started!

♦ Greta Ankeny, Study Group Chair

Spinning Study Group

The results from my recent questionnaire show that we have 12 social spinners, with 7 of those also interested in studying a specific spinning topic. At this point we are not ready to meet for study. I will be working on finding out what topics are of the most interest.

And for the social spinning I am hoping to hold spinning on my patio once or twice this fall. Dates and times to be announced once I have figured them out. It's too hot right now but will be cooling off soon I hope, and spinning outdoors will be nice.

♦ Jinks Hunter, Study Group Chair

Thursday Fiber Friends Zoom

This group is an online gathering of fiber-minded friends, and was formerly called Hook, Spin, Knit Gab. We show what we are working on, ask about project issues, inspire, encourage, and laugh. Sometimes we just come to rest and talk to our friends.

Come join us each Thursday at 2:00 on zoom at:

<https://us02web.zoom.us/j/84563744178?pwd=WVl4WWNGRmJmd3A1KzIzaUtEaUfTZz09>

◆ Jinks Hunter, Study Group Chair

From Your President

Welcome to the new Guild Year. There are some exciting educational opportunities planned for this year. I encourage you to look forward to receiving and reading your Newsletter each month. That's where the information is located about all the action.

I will keep my comments short, as this Newsletter is packed with lots of information.

As you all are wondering, we will keep track of the changing environmental parameters for meeting and we will notify you as soon as changes occur.

Thank you for your continued support and interest in the fiber arts.

◆ Rebecca Winter, President

~~~~~

## Sample Exchange

The sample exchange was put on hold due to the COVID19 pandemic, but it's time to start up again.

At the September meeting, which will be on August 28, I will be sending around a sign-up sheet for volunteers to provide samples for this year. I encourage you to consider sharing samples with guild members. It is great resource for guild members and a good way to let others know what fiber arts you are working on, or have worked on in the past. Samples may be woven, handspun, dyed, felted, knitted, crocheted or any type of fiber art.

There are sample sheets for weaving, spinning, braiding, and dyeing in folders at the back of the sample box and on the guild website under [Resources](#). Please feel free to print these for your guild samples or for your personnel use for record keeping.

The samples should be given to me, the sample chair, during, or prior to the meeting at the beginning of the month you signed up for and will be available for members the following month. For example, if you signed up for the month of March, your sample will be due in March and in the April newsletter and sample box at the April meeting.

Samples are available to all guild members. The sample box is usually at each meeting. Members are responsible for taking their samples, just place a check mark by your name when you take a sample from the folder in the box. If you are a new member and your name is not listed, please add your name to the list. Each month there will have a separate sheet to check. If you missed any meetings, you may take samples from the folders for the months you missed and check your name on the list.

If you have any questions, please feel free to contact me.

◆ Julie Gerrard, Sample Chair



## Equipment Rentals Available to Guild Members

As we are once again able to get together for Guild meetings, it will be easier to access the equipment the Guild has available for rent. The equipment list and the monthly rental fee follows below.

Equipment may be rented by members only (just as books may only be checked out from the library by members). Equipment may be used by a member free for a Guild sponsored event, such as a workshop or demonstration.

Equipment is rented on a month-to-month basis. The rental period may be extended by arrangement through the Equipment Rental Chairperson, if no other member has made a request to rent it.

Equipment care is the responsibility of the renter. If damage is assessed, the renter is responsible for repair or replacement.

Members who return equipment late will be responsible for paying the regular rental fees that are due for the entire time the equipment is in their possession.

### Check-out Procedure

- A. Check availability of equipment with the Equipment Rental Chairperson. (Vila Cox)
- B. Reserve equipment.
- C. Make arrangements for pick-up of equipment with the Equipment Rental Chairperson.
- D. Sign the short rental agreement.
- E. Pay the rental fee to the Equipment Rental Chairperson.
- F. Pick up equipment from the storage location.

### Check in Procedure

- A. Make arrangements for drop-off of equipment with the Equipment Rental Chairperson.
  - B. Equipment will be returned to the storage location.
  - C. Pay balance of rental fees, if any are due, to the Equipment Rental Chairperson.
- ❖ Vila Cox, Equipment Chair

### **Equipment Rental Fees**

#### **Weaving Equipment**

- 8H Floor Loom Bundle - \$35/month
  - Baby Mac - shuttle - bobbins - reed hook - heddle hook - warping board
- 4H Floor Loom Bundle - \$30/month
  - 4H J-Made - shuttle - bobbins - reed hook - heddle hook - warping board
- Table Loom Bundle - \$25/month
  - Table Loom - shuttle - bobbins - reed hook - heddle hook - warping board
- Baby Mac 8H Floor Loom - \$30/month
- 4H J-Made Floor Loom - \$25/month
- 8H Table Loom - \$20/month
- Warping Board - \$5/month
- Warping Raddle - \$5/month
- Spool Rack - \$5/month
- Inkle Loom - \$5/month
- Tapestry Loom - \$5/month

#### **Spinning Equipment**

- Fricke Drum Carder - \$5/month
- Coarse Drum Carder - \$5/month
- Pat Green Picker - \$5/month
- Blending Board - \$5/month
- Schacht Wool Hand Cards - \$5/month
- Cotton Hand Cards - \$5/month
- Indigo Hound 4-Pitch Wool Combs - \$5/month

#### **Other Equipment**

- Rag Strip Cutter - \$5/month
- Blocking Board - \$5/month
- Bead Loom - \$5/month
- Display Unit - \$10/month
- Mannequin - \$5/month

## Officers and Chairs

- President - Rebecca Winter
- Vice President - Mary Berent
- Vice President - Connie Griffin
- Secretary - Sally Johnston
- Treasurer - Mitzi Meyers
- Membership Officer - Dagmar Rapp
- Librarian: Sally Johnston
- Web Master: Vila Cox
- Newsletter Editor: Rebecca Winter
- Sample Exchange: Julie Gerrard
- Outreach Committee: Janet Stanger
- ANWG Representative: Connie Griffin

- Spinning Study Group: Jinks Hunter & Dagmar Rapp
- Weaving Intensive: Connie Griffin & Rebecca Winter
- Day Weaving Study Group: Greta Ankeny
- Garment Study Group: Greta Ankeny
- COE Study Group: Mary Berent
- Bobbin Lace Study Group: Vila Cox
- Thursday Fiber Friends Zoom: Jinks Hunter

### Website

<http://www.handweavers-guild-boise.org>

### Mailing Address

PO Box 6258, Boise, ID 83707

~~~~~

Meeting Minutes

The following is an accounting of the June 2021 meeting of the Handweavers Guild of Boise Valley, at Bowmont Community Church, south of Nampa, Idaho, **Saturday, June 5, 2021.**

Of note, this was the first in-person meeting held since the COVID-19 Pandemic lockdown and public health safety measures were initiated beginning March 20, 2020. The meeting was called to order at 11:05 following joyous greetings and reunions, by Doug Ranck, President.

Roll call commenced by way of circulation of an attendance record for signatures.

Acknowledgment of first in-person meeting in 14 months with expressions of joy and gratitude.

Reminder of the annual June Membership deadline for dues payment. Please pay your dues for inclusion in the 2021-2022 Handbook and Directory.

Treasurer's Report from Mitzi Meyers, "we have money."

Library Report, "all books, periodicals, tools and equipment are still accounted for at the First Congregational United Church of Christ, 2201 Woodlawn, Boise."

Presidential hand-off and meeting bell transfer from outgoing President Doug Ranck to incoming President Rebecca Winter at 11:23am.

Tour de Fleece 2020 prize distribution.

Tour de Fleece 2021 current information and event calendar distributed.

Show and Tell.

Close of meeting bell rang at 12:15pm.

Annual yarn and equipment sale commenced for approximately 2 hours.

Attendance Record shows the following present: Vila Cox, Doug Ranck, Mitzi Meyers, Julie Gerrard, Anne Oglevie, Jinks Hunter, Mary Berent, Michele Belson, Dolores Sonders, Connie Griffin, Dagmar Rapp, Amy Brown, Rebecca Winter, Jean Zaska, Mary Chown, Katzy Luhring, Jeanne Phillips, Gwendolyn Downs.

♦ Respectfully submitted by Mary Chown, substitute secretary

Board Meeting ~ August 12, 2021

The meeting was called to order by President Rebecca Winter.

Members present: President - Rebecca Winter, Treasurer - Mitzi Meyers, Vice Presidents - Mary Berent and Connie Griffin, Past President - Doug Ranck, Membership Officer - Dagmar Rapp, Secretary - Sally Johnston, Jinks Hunter, Julie Gerard, Vila Cox, Dyan Lay, Janet Stanger, Anne Oglevie.

Rebecca requested that all guild officers read our job descriptions and policies.

Rebecca inquired whether we want to continue with the Board sub-group on Groups io. After a brief discussion it was determined that we should keep the sub-group as it is easier for the officers to get their communication. We will also include committee chairs in this group.

Rebecca also informed us that they would like to have a volunteer to be on the board for the next Intermountain Weaving Conference (which will be in Logan, Utah, in the summer of 2023).

We have a plethora of photos accessible from our Groups io web page showing our work. Rebecca is willing to look through them and delete those that are no longer needed.

Rebecca offered a report for the workshop by Mary B. We have a profit of \$450.00 from her workshop. Rent has been paid for housing Pat Anne's materials stored in the church. The rent has been paid to the church for the meetings for the upcoming year.

Mary B. gave us an update on future programs and workshops. There are only 10 people signed up for the next workshop, Doubleweave - Double Rainbow by Jennifer Moore, and we need 13. There is a workshop scheduled in April by Cynthia Newman. Lynn Ruggles will be having a workshop in May and she is willing to present at our monthly program in May.

Dagmar attended Fiber Frolic and met a member of Idaho Wool Growers group. There is a possibility they may do a program for us. Jinks concurred and suggested we invite their members to attend. Maybe we can get people to join our guilds.

Mitzi gave us her treasurers report. We have three accounts at US Bank. In checking we have approximately \$8000.00, savings approximately \$7000.00 and approximately \$12,000.00 in a CD.

Dagmar reported on membership. There are 31 paid-in-full members, 4 new members, 2 recent members. Forty-four people have not renewed since last year. We are not going to extend the free membership due to Covid 19. Doug made a motion to end the free membership Mitzi seconded it and the board members voted yes. So everyone who wants to be a member must pay their dues this year. Dagmar is extending the due date for membership to October 15 and the new directory will come out in November. It was also requested that someone volunteer to make the sample.

Amy B. ,new member needs to be invited again to join the groups.io. Dagmar will send the invitation again.

We pay month to month rent for the room holding Pat Anne's fiber and the rent will come from sales her materials. The board previously voted on this and Rebecca will put some photos of Pat Anne's wool etc. in the upcoming news letter. Items will also be offered to local spinning groups. Perhaps this may result in acquiring members to our guild.

Rebecca said that someone suggested only members of the guild should have access to our programs, study groups, etc. using guild resources. A lengthy discussion ensued in which valuable information was presented. In the end it was decided to continue as it stands and may be revisited at a later date if needed.

Dagmar asked about equipment rentals for members. Vila reported about the rental of equipment. She will maintain the list of items.

Outreach chair Janet S. reported the Fair will not be having demonstrations this year due to Covid 19. She will be demonstrating at Old Farm Day and asked for more volunteers. The date is Sunday the 26th of September from 12:00-4:00 with a silent auction. This will be posted in the upcoming newsletter. She said there is another event in October called Trailing of the Sheep.

It was mentioned and agreed that we will continue with our current committee chair selection as is.

Julie G. reported that we need to start up the sample exchange from the beginning.

We were informed that the church requires us to wear masks to our meetings.

We discussed having our programs on Zoom. A final decision was not made.

In our next meeting Jinks will present the program from Tour de Fleece.

Rebecca needs information to go into the next newsletter by August 16th.

Janet would like to be informed whenever we get requests for assistance through the website. She will manage the guild's response.

Vila wants all program information sent to her for the regular website.

The meeting was adjourned.

◆ Respectfully submitted, Sally Johnston, Secretary



Member's Work

Cynthia Pollock →

Hello, I've been beating the heat and smoke by making rugs with Pendleton selvedge on my big LeClerc loom. I also have towels on my 8-shaft.



Raelene Vista

I had only two incomplete bobbin lace projects on pillows in June, so I started another one. This is Cantu style lace, from Italy. It's the first Cantu project I've started without a teacher. I'm not very expert at it, and the techniques

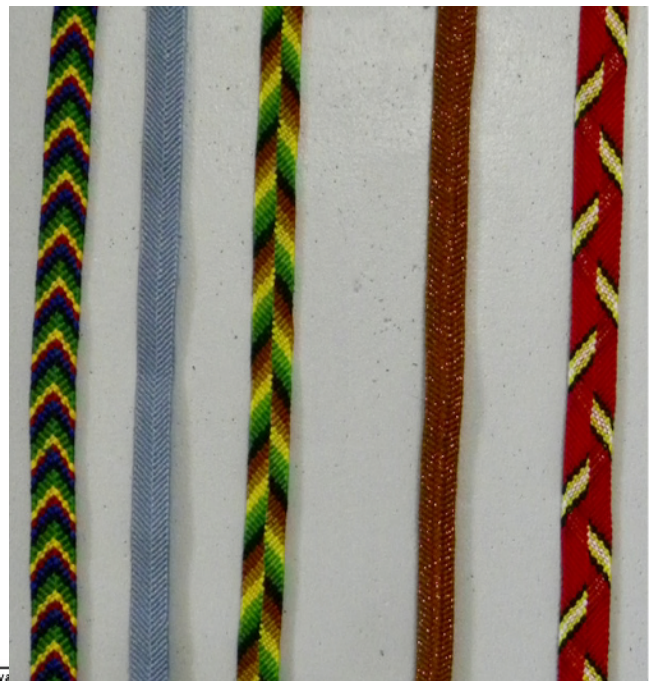
are very different from the other bobbin laces I do, so it's going slowly. I'm spending a lot of time reviewing my notes. This picture shows where I am now.

I've also started tatting some small hearts. I've added a picture of one that I just finished.



Esther Kleinkauf →

I have been doing a different "style" of takadai braids. With these you work more than one thread on a side before going to the other. These I call "three-at-once" braids as you open a shed and pass three threads through before beating and going to the other side. It makes a thick soft braid.





handweavers guild of boise valley

2021-2022 Membership Form

Name: _____

Address: _____

Phone: Cell _____ Home _____ Work _____

Email (please print carefully): _____

____ New Membership?

Annual membership dues:

- \$30.00 per person payable by September 30, 2021 (\$50 if you want printed newsletters via U.S.P.S)
- Newsletters will be sent electronically via groups.io. If you prefer receiving hardcopy newsletters, **include an additional \$20.00** & indicate here _____
- Checks are payable to the Handweavers Guild of Boise Valley (HWGBV)
- Please deliver or mail this form with your check to:

Dagmar Rapp, c/o Handweavers Guild of Boise Valley, PO Box 6258, Boise ID 83707

Additional Member Information

Which activities do you use?

____ Program ____ Library ____ Study Groups

____ Workshop ____ Equipment Rental ____ Intensives

____ Yarn and Equipment Sale

In what ways would you like to contribute to the guild?

____ Serve on Board ____ Lead a monthly program. Topic: _____

____ Serve on a Committee ____ Other _____:

Suggestions

Future program topics: _____

Future workshops: _____

Equipment or books to add to library: _____

Membership Policies

Members who have not paid their dues by October 30 may be dropped from the membership rolls (including published directory, groups.io membership and Guild email distribution list).

If a New Member pays for their dues in April or after, the dues will apply to the remainder of the current year and to the following year, as well. Dues paid late in the year, but before April, will apply only to the current year. The Guild Year runs from July 1 to June 30.

www.handweavers-guild-boise.org

For use by Membership Officer

Amt Paid: _____ Date Paid: _____ Cash: _____ Check number: _____





2021-2022 Photo Release Form

Photos of Guild activities and members' work may be taken at meetings, workshops, study groups or other events. These photos may be posted on the Guild's website, in the Newsletter or in social media (e.g. Facebook, Instagram, Twitter, etc) only with your permission.

- Approval must be given via this form for Handweavers Guild of Boise Valley (HWGBV) to publish a photo of you in which you are clearly identifiable.
- Approval must be given via this form for HWGBV to publish photos of your fiber work.

___ I hereby permit HWGBV to use photos of me and/or pieces of my work in any publication

___ I DO NOT permit HWGBV to use ANY photo picturing me or my work for any purpose

SKIP the section below and sign at the bottom if you checked either option above

I permit publication in the following media ONLY (check all that apply):

- _____ The Guild Newsletter
- _____ The Handweavers Guild of Boise Valley Website
- _____ Facebook
- _____ Instagram
- _____ Twitter

I permit HWGBV to publish (check one or both):

- _____ Photos of me
- _____ Photos of my work

I have specific instructions about how the HWGBV may use photos picturing me or my work. Please describe:

Printed Name: _____ Date: _____

Signature: _____

