



Connecting Threads

Handweavers Guild of Boise Valley
September, 2022

August 27th Program: Learn About Study Groups

Christine Brady and I have been brainstorming and planning since we both accepted the nomination for the VP role. We agreed we wanted to do something more interactive with the programs this year. **We would like to get us out of our seats, talking about weaving and textiles with each other** in less of a lecture hall format.

The first program is designed to do just that. Each Study Group leader will tell us the basics of their group. The Who What Where and When. Then they will take a seat behind a placard to take individual questions.

In addition, there will be a wish list placard for groups we do not have, but might like. And a suggestion from Cindy Griewe is - we might like mini-series groups which might only investigate a topic for a few months. I like that idea!

So please attend. Listen to what the various Study Groups are doing and imagine how you might fit in.

◆ Barbara Redman, Vice President

Calendar of Events

Regular Meeting:

August 27, 2022 ~ 11:30 a.m.

~ Learn About Study Groups

At the First Congregational Church of Christ,
2201 Woodlawn, Boise, in the Banquet Room
See also the Zoom link from Dyan via Email

October 1, 2022 ~ The next Regular Meeting

Events:

September 24, 2022 - Fiber Frolic

10:00 am - 4:00 pm, in the Basque Block

September 25, 2022 - Old Time Farm Day

12:00 - 4:00 pm

Hidden Springs, Cartwright Ranch

Workshop:

February 10 & 11, 2023 ~ Felting by Flóra

Carlile-Kovács

VP Workshop Notes

Christine and I have also been moving along with workshop ideas. Our focus was to identify workshop leaders that were excellent, who had a developed portfolio and could stand as fiber artists. We have been using the ANWG instructor listings to identify such people.

I have identified a felter, Flora Carlile-Kovacs, as such a person. She has agreed to teach a panel class on February 10-11. Each student will make 2 mirror image felted panels using their own design or a traditional Kyrghizstan pattern.

Christine is working on a Tapestry workshop. ◆ Barbara Redman, Vice President

Study Groups:

August 30, 2022 ~ Garment Study Group

10:30 a.m. ~ At Julie Gerrard's home

September 8, 2022 ~ Beginning Weaving Study Group

6:00 p.m. ~ At Mitzi Meyers' home & via Zoom

September 13, 2022 ~ Lace Study Group

10:00 a.m. to 12 p.m. ~ At Vila Cox's home

August 18 & September 15, 2022 ~ Tapestry Study Group

7:00 p.m. ~ See your email for meeting details

September 20, 2022 ~ Day Weaving Study Group

10:30 a.m. ~ At Jamie Landry's home

Every Thursday ~ Thursday Fiber Friends Zoom

2:00 p.m. ~ Request the Zoom link from Jinks Hunter

January 14, 15, & 16, 2023 ~ Weaving Intensive Study Group

Look for details in future Newsletters

☆☆ 2022-23 Calendar of Programs ☆☆

Aug 27 - Learn more about our Study Groups
Oct 1 - Fireball Alpaca: Eddie Van Hout
Nov 5 - Artist Cynthia Brandt of Boise
- Temari Balls
Dec 3 - Christmas Party
Jan 7 - Share a Favorite Textile

Feb 4 - Mini Workshops
Mar 4 - Dying Wool Fiber
Apr 1 - Fashion Show with Margo Vaughn
May 6 - Yarn & Equipment Sale
Jun 3 - End of Year Picnic



Dues for the 2022 - 2023 Year

Have you paid your membership dues for the current year?
Now is the time.

Here are just a few of the benefits of Membership:

- The camaraderie of like-minded fiber enthusiasts
- Access to Study Groups and Workshops
- Checking out books and videos from the Library
- Renting our ever-expanding inventory of Equipment

I will have the electronic roster of members at the next meeting if you need to check on the status of your membership.

◆ Connie Griffin, Membership Officer

Advertising Opportunity!

We have space in the member directory for your advertisements! The fees for placing advertisements in the Membership Directory will be \$10.00 per space of 4 1/4 by 5 1/2 inches. Our audience reaches approximately 70 members, so this is a great value.

Please send your copy to the incoming membership officer, Connie Griffin, at membership@handweavers-guild-boise.org. The Deadline is now!

◆ Connie Griffin, Membership Officer

Membership Directory

I need a volunteer to make the samples for the directory cover. We currently have 65 members registered so I'm anticipating needing approximately 80-110 samples if all prior members renew. I will also need volunteers to help me assemble the membership directory. I'll be working on it on the afternoon of Sunday, September 24th, and continuing in the evenings after work the rest of that week if necessary. If you have a bit of time to help, please contact me.

The Membership Directory will be available at the October 1st regular meeting. If you have not renewed by September 15th your contact information will not be listed in the directory and you will be removed from groups.io, which services our mailing list. Please fill out both the membership form and the photo consent form as this helps me ensure I have the correct contact and interest information EVEN IF YOU FILLED ONE OUT LAST YEAR. The interests you indicate are shared with the vice presidents so they can put together programs that interest you, so it's vital you share this information.

◆ Connie Griffin, Membership Officer

Two Events



Fiber Frolic on September 24



Old Time Farm Days on September 25

We are sharing information and demonstrations of our craft with the public at two venues during the last weekend of September. Thanks to those who have volunteered to ply your craft and to promote the Guild. If you are interested in also participating, please let us know. More will be revealed and discussed at the meeting on the 27th. I look forward to seeing you there.

◆ Rebecca Winter, President



From Your President

One of the things I love about our Guild is our **inclusive and sharing nature**. We are lucky in this characteristic, because not all guilds share it. As we grow (and we are growing), my hope is we maintain this in all our interactions. We each have many opportunities to steer conversations into this positive frame, as opposed to allowing the separating frame to persevere. There has been entirely too much separation in our culture over the past couple of years, IMO. We are a group of very strong people - powerful crafts persons!

So, ask yourself when you hear disparaging words of separation → How can I turn this around and bring us closer together? How can I be honoring and allowing of our amazing differences? How can I encourage the development and sharing of our strengths?

❖ Cheers, Rebecca Winter, President



Librarian's Report

I am happy to report that due to a wonderful contribution from Mary Chown we have increased the books we have in the library available for knitters and crocheters. Prior to her donation we had only 8 books on knitting, and even fewer on crocheting. We have acquired 17 library books on knitting, some of which are for both knitters and crocheters. We also have a book about knitting with beads. I have already checked out the book called *Japanese Inspired Knits*. There are books from many different regions. The new books available for check-out are located on the table in the Library, so they are easy for you to find. There were also many duplicates or publications not appropriate for our library, so look for those on the Free Table.

❖ Sally Johnston, Librarian

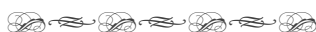


Book Report: Celia Quinn Workshop Notebook of Spinning Samples ~ Spun by Penny Schraufnagel

A recent addition to the Guild Library is this amazing collection of spinning samples. The collection consists of 84 well-documented hand spun samples and bits of the starting fiber. Some of you may remember this workshop, sponsored by the Guild. The workshop handouts are copyright dated by Quinn in 2002, however there is no note referencing the date the workshop was held.

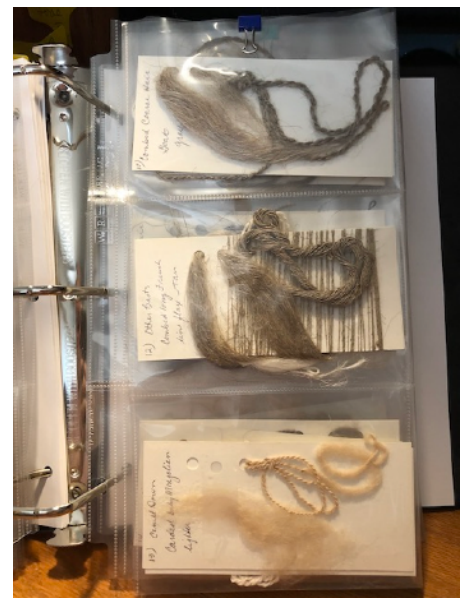
The handouts have good information about fiber, its preparation, and about how to adjust your wheel for the various kinds. I would say this is an excellent reference for the spinners in our Guild. Look for it on the table in the Library.

❖ Rebecca Winter



New Books

Budd, Ann, Ed	<i>Classic Knits: Marianne Isager Collection</i>
Harding, Louisa	<i>Knitting in the Details</i>
Moreno, Jillian & Singer, Amy	<i>Big Girl Knits</i>
Melanson, Robin	<i>Knitting New Mittens & Gloves</i>
Guy, Lucinda	<i>Northern Knits</i>
Vogue, Ed	<i>Vogue Knitting: Shawls & Wraps</i>
Epstein, Nicky	<i>Knitting Never Felt Better</i>
Farson, Laura	<i>New Twists on Twined Knitting</i>
Vogue, Ed	<i>Vogue Knitting: Stitchionary 2</i>
Hansel, Alison	<i>Charmed Knits: Projects for Fans of Harry Potter</i>
Nieman, Mary Libby	<i>Bead Knitting</i>
Caron, Cathy	<i>Hip Knit Hats</i>
Leisure Arts, Ed	<i>Afghans on th Double</i>
Ellis, Fiona	<i>Inspired Fair Isle Knits</i>
Knight, Erika	<i>Simple Knits with a Twist</i>
Budd, Ann, Ed	<i>Japanese Inspired Knits: Marianne Isager Collection</i>
Burkett, Caroline	<i>Hand Knits for the Home</i>





Sample Exchange

There are still a few more available months for members to provide a sample for the sample exchange. At the September meeting, on August 27, I will be sending around a sign-up sheet for volunteers to provide samples for this year. I encourage you to consider sharing samples with guild members. It is great resource for guild members and a good way to let others know what fiber arts you are working on, or have worked on in the past. Samples may be woven, handspun, dyed, felted, knitted, crocheted or any type of fiber art.

There are sample sheets for weaving, spinning, braiding, and dyeing in folders at the back of the sample box and on the guild website under resources. Please feel free to print these for your guild samples or for your personnel use for record keeping.

The samples should be given to me, the sample chair, during, or prior to the meeting at the beginning of the month you signed up for and will be available

for members the following month. For example, if you signed up for the month of March, your sample will be due in March and in the April newsletter and sample box at the April meeting.

Samples are available to all guild members. The sample box is usually at each meeting. Members are responsible for taking their samples, just place a check mark by your name when you take a sample from the folder in the box. If you are a new member and your name is not listed, please add your name to the list. Each month there will have a separate sheet to check. If you missed any meetings, you may take samples from the folders for the months you missed and check your name on the list.

If you have any questions, please feel free to contact me.

~~~~~

The sample this month was handspun by Janet Stanger. It is Chiengora, 100% pure Bearded Collie, which is a 4" to 6" long fiber. The natural color dog fiber was washed by the owner and Janet carded and spun the fiber on her Ashford Traditional spinning wheel.

◆ Julie Gerrard, Sample Chair



## Lace Study Group

The Lace Study group will September 13th, 10am to 12pm, at Vila's. All manner of lace is included, and some days we don't get around to making lace at all. So bring your bobbin lace pillow, knitting needles, tatting shuttle, or just yourself.

◆ Vila Cox, Study Group Chair

## Tapestry Study Group

The Tapestry Study Group meets the 3rd Thursday of each month at 7 PM in person and also on zoom. A reminder will be sent out the week of the meeting through groups.io.

Our August in-person meeting will be held at the home of Sally Johnston. Her address will be included in the meeting reminder along with the Zoom link.

Linda Morton-Keithley will present a talk on her favorite fiber, churro.

◆ Cindy Schafer, Study Group Chair

## Thursday Fiber Friends Zoom

This is a great way to just hang out at home, show each other what we are working on, ask about project issues, inspire, encourage, and laugh. Hope you'll join every Thursday at 2:00 pm. Request the Zoom link from Jinks Hunter.

◆ Jinks Hunter, Study Group Chair

## Day Weaving Study Group

Come join the Day Weavers group, the 3<sup>rd</sup> Tuesday of each month, unless otherwise notified. This group is about sharing, learning, and supporting. The willingness to share and the combined knowledge make this group a true learning experience every time. All guild members are welcome. Please bring your questions and projects, or just come to absorb and talk weaving.

NEXT meeting is September 20, at the home of Jamie Landry.

◆ Jenni Jimmerson, Study Group Chair

## Beginning Weaving Study Group

~ Second Thursday of each month at 6pm

~ In-person and Zoom link

We meet at the homes or meeting places offered up by those who attend. This is a no-teacher discussion and study group, where the purpose is to answer questions that beginners may have about weaving topics of all types. All people of every level of knowledge are invited to join.

- September 8 at Mitzi Meyer's in Boise: Understanding Weave Structure: Classifications, the look, and the purposes
  - October 13 at Lunatic Fringe in Fruitland (Michele Belson): Yarns: Types, qualities, and purposes
  - November 10 at Cindy Griewe's in Kuna: Topic TBD
  - December 8 at Jamie Landry's in New Plymouth: topic TBD
  - January 12: TBD (any volunteers from the Boise/Eastern region?)
  - February 9: TBD (any volunteers from the Ontario/Fruitland/western region?)
  - March 9: TBD (any volunteers from the Boise/eastern region?)
  - April 13: at Suzi Todd's in Fruitland. Topic TBD
- ◆ Cindy Griewe, Study Group Chair



## Garment Study Group

The garment group will meet on Tuesday August 30th at 10.30am at Julie Gerrard's home.

All are welcome.

◆ Anne Oglevie, Study Group Chair

## Tapestry Study Group Report

◆ A thank you to Kirsten Badger for her presentation to the Tapestry Group on July 21, 2022. Here is a brief summary for you all!

Kirsten says, "That is who I am, I need a motif." Her inspirations include magazines, travel, her home, and a first weaving was an image of balsam root. This is where she learned to use a simple cartoon. Her original balsam root cartoon had several flowers, with many leaves. She remarked that she had no idea how to do it, when a fellow weaver told her to use only 2-3 leaves, and 2 flowers. She completed this weaving using chenille for the leaves, and embroidery floss to create texture.

Kirsten's shared wisdom for new tapestry weavers is to have first projects be simple, to do the weaving in a simple way. You cannot learn from a book, you need to have hands on. Then you can go back to more complicated methods.

Her second tapestry was of her home. She used cotton weft, which shrank. The weaving had a sun of acrylic yarn, which after packing the weft, she found it would spring back. Be aware, if only a few rows of weft - they will spring back a bit.

In October of 2007 a friend teaching English in Istanbul invited Kirsten to visit. She went and spent a week learning Kilim weaving. This inspired her to weave a piece with a whirling dervish, a magic carpet, and an exquisitely detailed mosque. Some of the yarns she purchased from the teacher were a dark blue, a brown, and a light blue yarn. This yarn was about 1150 yards per pound.

When discussing yarns to use, for warp threads, 8/3 linen is her favorite, but she



has also used 5/2 pearl cotton. She usually weaves with a sett of 8 EPI. For weft and detailed weaving, she uses 4 strands of yarn that has 5800 yard per pound. Her favorite yarns have been Lambspride, Harrisville, and Zephr.

Kirsten used embroidery floss on one of her tapestries to emphasize lines and stars. She also recommends outlining with black for image definition.

She is now doing a color study of the Northern Lights.

### **Kirsten's Notations for the Beginning Tapestry Weaver~**

- Start smaller, you can learn a lot.
  - Use a simple cartoon.
  - You can enlarge most any motif on a copy machine.
  - Use fine yarns for different textures.
  - For circles, write every step, and then complete the exact reverse! Use small graph paper to assign picks. You will see that you must weave straight up a lot more, 5 rows will not be enough.
  - Outline with black for definition.
  - For lazy lines use many butterflies.
- ♦ Joan Sheehan, Reporting



## **Meeting Minutes for June 4, 2022**

### **Board Meeting**

Board Members present: Rebecca Winter, President; Mary Berent & Connie Griffin, outgoing Vice Presidents; Barbara Redman, incoming Vice President; Mitzi Meyers, Treasurer; Doug Ranck, Past President & Pat Ann Fund Administrator.

The primary purpose of this Board meeting is to facilitate the transition between the outgoing Board and the incoming Board members.

[groups.io](https://groups.io) was discussed. All member are able to join any of the sub groups within [groups.io](https://groups.io). Many documents and other information is available to all members at the [groups.io](https://groups.io) website.

The tradition from outgoing vice-presidents to incoming vice-presidents, in particular with respect to the upcoming Beginning Weaving Workshop, was discussed. Currently there is only one person actually paid.

Barbara Redman distributed the tentative list of programs for the coming year. The topics were discussed and suggestions made.

The Treasurer's report was given with specific amounts. They are not included in these minutes due to the public nature of the Newsletters online. The treasury is still used as our self-insurance for our library and equipment holdings.

Connie Griffin brought up the potential of the Guild setting up some sort of electronic system for payments of dues, workshop payments, and other potential uses. She will look into that topic and report back at the Board meeting planned for August, before the first regular meeting for next year.

### **Regular Meeting**

Members introduced themselves with their names and what their plans for the summer might be in just three words.

Members Present: This may be a partial list, as we neglected to pass around the sign-in sheet. Thank you for understanding. Rebecca Winter, president, Mary Berent and Connie Griffin vice presidents, Mitzi Meyers treasurer, Doug Ranck previous president, Barbara Redman, incoming vice president, Cheryl Wurtenberger, Jinks Hunter, Jeannie Phillips, Tasha Denegal, Jenni Jimmerson, Vila Cox, Lori Porreca, Carolyn Swenson, Irene Chandler, Ester Kleinkauf, Michele Belson, Janet Stanger, Mike and Kimberly Dillon, Katzy Luhring, Cindy Schafer, Greta Ankeny, Julie, Gerrard, Carol Freeman, Chris Farrin, Tera Jones, Kari Lawton & SO, Jaimie Landry, Anne Oglevie, Kathy McGowan, Marita Turner, Raelene Viste, Jean Zaske, Angela Gronewold, Vicky Tollefson, Suzie Todd. Marlene Bean & Joan Ranck joined via Zoom.

Announcement that incoming officers will begin their responsibilities at the end of this June meeting. Rebecca Winter thanked all of last year's Board members and handed out thank-you gifts to those

present. Dues are due now for the upcoming year. Connie Griffin as the incoming Membership Officer will take dues and has membership forms. The Beginning Weaving Workshop was described and members were encouraged to sign up soon.

Show and Tell - There were many inspirational fiber arts shown.

Jinks Hunter gave details of Tour de Fleece which begins on July 1. More details, the guidelines and a calendar of the 3 week event were in the newsletter, and can be found on the Guild website.

There were several announcements about study groups and other activities that will be coming up this summer.

Rebecca Winter described how the Yarn and Equipment Sale works, with 10% of sales to be paid to Treasurer Mitzi Meyers at the end of the sale.

The meeting was adjourned and the Sale began. Everyone brought their own lunches and there was lots of visiting.

- ◆ Respectfully submitted, Mary Berent, substituting for Sally Johnston

Addendum for the minutes record: The Board voted via groups.io to make some adjustments to the fees for the Beginning Weaving Workshop.

- ◆ R Winter, President



### Officers and Chairs

It takes a Village.

- President - Rebecca Winter
- Vice President - Barbara Redman
- Vice President - Chris Brady
- Secretary - Sally Johnston
- Treasurer - Mitzi Meyers
- Membership Officer - Connie Griffin
- Past President - Doug Ranck
- Librarian - Sally Johnston
- Web Master - Vila Cox
- Newsletter Editor - Rebecca Winter
- Sample Exchange - Julie Gerrard
- Outreach Committee - Janet Stanger
- Social Media - Dyan Lay
- ANWG Representative - Connie Griffin
- Spinning Study Group - **Please Volunteer**
- Weaving Intensive Study Group - Chris Farrin & Rebecca Winter
- Day Weaving Study Group - Jenni Jimmerson
- Beginning Weaving Study Group - Cindy Griewe
- Garment Study Group - Anne Oglevie
- COE Study Group - Mary Berent
- Lace Study Group - Vila Cox
- Thursday Fiber Friends Zoom - Jinks Hunter
- Tapestry Study Group - Cindy Schafer
- Pat Ann Fund Administrator - Doug Ranck
- Church of Christ Contact Person - Vila Cox
- Bowmont Church Contact Person - Rebecca Winter

### Website

<http://www.handweavers-guild-boise.org>

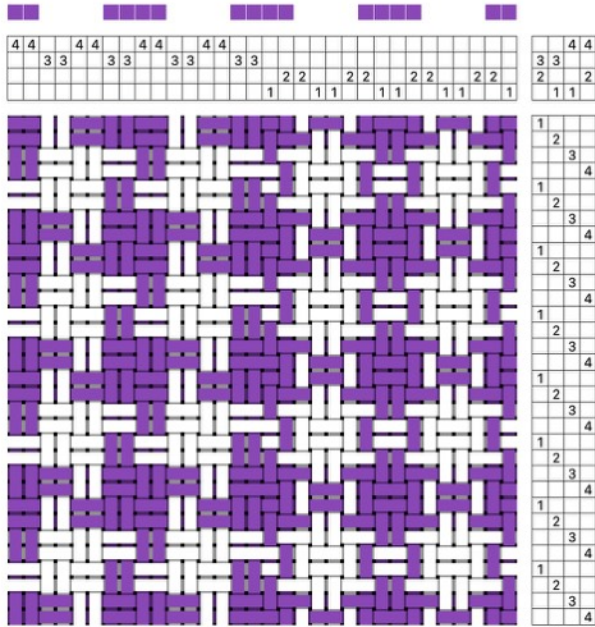
### Mailing Address

PO Box 6258, Boise, ID 83707

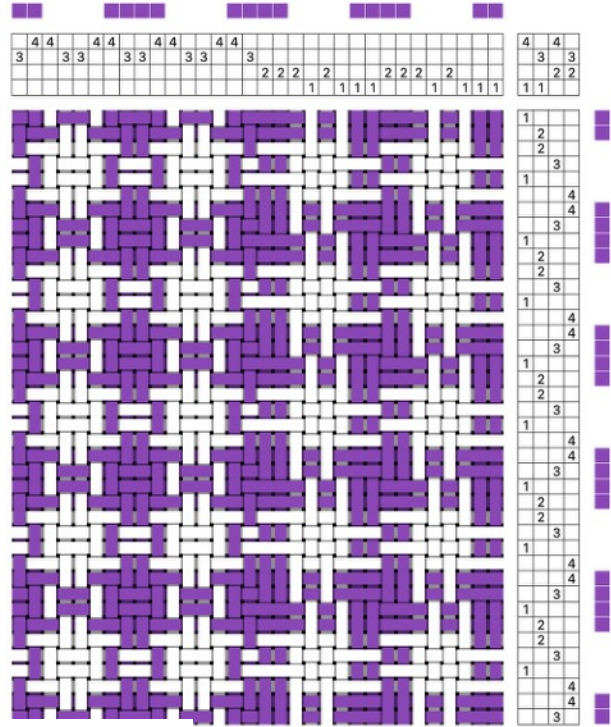


## 2023 Weaving Intensive

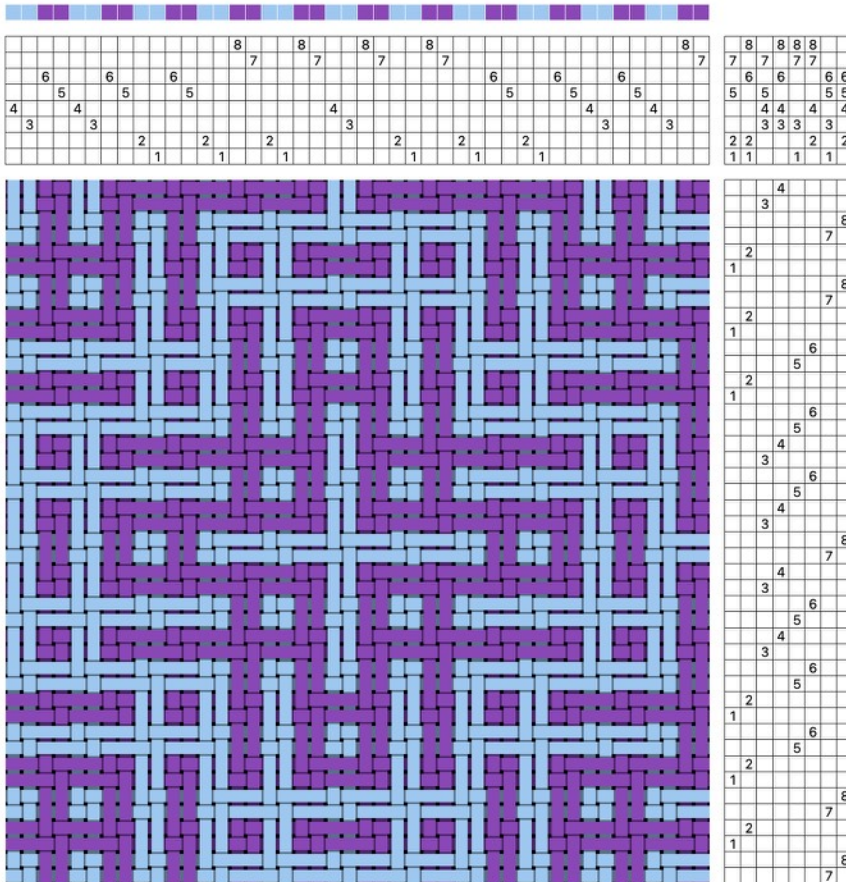
Our topic this year is Color-and-Weave. This page offers some inspiration. Because I prefer to fill all the pages. ♦ R Winter, Editor



Draft #61835 from [handweaving.net](http://handweaving.net)



Draft #62009 from [handweaving.net](http://handweaving.net)



Draft #74557 from [handweaving.net](http://handweaving.net)