

Connecting Threads

Handweavers Guild of Boise Valley
February, 2008

February Program

Sewing with Handwoven Fabric Scraps

Rebecca Winter will be presenting the program at the February meeting. In an effort to continue the learning from the recent workshop, in which participants learned how to sew a garment from handwoven fabric, we will talk about how to use some of those left over scraps. The possibilities are endless.

Plan to bring any project you have made using your handwoven scraps.

March Program

Evolution of a Tapestry Weaver: My Journey to Enchantment

Caroline Dade will present an overview of tapestry weaving with an emphasis on her experiences. Be sure to make plans to come hear more about her wonderful pieces.



Calendar of Events

February 1, 2008 - Guild Meeting - Adelman House
11:30 am - Business Meeting
12 noon - Social time
- Library browsing
1:00 p.m. Program - "Sewing with Handwoven Fabric Scraps"
- Rebecca Winter

February 14, 2008 - Spinning Study Group
We will meet at Maralyn Larson's clubhouse from 6:30-8:30 p.m.
See Study Group News, pg. 4

March 1, 2008 - Board Meeting
10:00 - 11:00 a.m.
Moxie Java, 1122 S Vista, Boise, ID
All members are invited to attend.

March 1, 2008 - Guild Meeting - Adelman House
Program - "Evolution of a Tapestry Weaver: My Journey to Enchantment"-Caroline Dade

Deciphering the Color Code



Our February Color Code study comes from Handwoven Magazine, Sept/Oct, 2007, page 80. Let's study the color palette called "Rising Tides." It includes black, burgundy, royal blue, and three values of blue-green. This is one of the palettes offered by the committee for our 2008 Challenge (see pg. 6).

Get a head start on your Challenge projects now by designing with these colors!



From the Nominations Committee

It's that time again. We are calling for volunteers to help YOUR guild be the best it can be. This is your opportunity to stir things up to your own personal liking. Please, if you are the least bit interested in any office, call one of the nominating committee members, and they will be happy to help you with information. Committee members are: Mitzi at 340-9775, Mary B. at 939-8906 or Al at 343-7300.

A Brief Synopsis of the duties of the officers:

President: Leads meetings and assures the coordination of all the workings of the Guild.

Two Vice Presidents: Plans programs and workshops for the year. This is a wonderful way to create the programs you are most interested in, and pick someone you will have fun working with.

Secretary: Keeps the minutes of the meetings. Sends minutes to the newsletter person for publication in the Newsletter. Creates needed correspondence.

Treasurer: Manages the money and maintains a ledger of transactions, under the direction of the board and the Guild membership. Develops a budget and presents to the Guild.

Membership Chair: Collects membership dues. Maintains the membership list. Promotes the Guild through publicity. Meets and greets members and visitors at the meetings.



Karen Selk Workshop

The Workshop being given by Karen Selk, is scheduled to be held on March 14-16. The workshop is currently full, but the Vice Presidents are taking names for the waiting list.

Would you like to be the hostess for Karen? Having a workshop leader stay with you is a really fun and usually very interesting and instructive experience.

She is coming on Thursday, March 13 and leaving on Monday, March 17. The responsibility includes picking her up at the airport, providing a room and breakfast for her each day of her stay, bringing her to and from the workshop every day, making sure she gets lunch and dinner (you don't necessarily have to provide lunch or dinner), and getting her back to the airport on Monday. She does not eat meat, only fish, seafood, eggs and cheese. It's a great opportunity to get to know one of the weaving legends of our time! If you want more information about hosting Karen or if you would like to volunteer to host her, call Mary Berent at 939-8906.



Guild Meeting Minutes

January, 2008

Attendees introduced themselves. Minutes from the last meeting were approved.

VP Report: Karen Selk workshop on March 14-15-16 has openings. Cost is \$230 which includes yarn. Contact Mary Berent if you are interested.

Programs: March program will be Tapestry with Caroline Dade.

Weaving Intensive has 12 participants signed up. The topic is Color & Weave.

Spinning Study Group will meet the 2nd Thursday from 6:30-8:30 p.m..

COE - will meet in February at the coffee shop at Kootenai & Vista at 9:30 before the regular meeting.

Nominating Committee volunteers are Al Hayden, Mary Berent and Mitzi Meyers.

Challenge Chair is Penny Schrafnagel and the topic is Crystal Ball Colors. Handwoven Magazine from Sept/Oct 2007, had an article on the color forecast for the coming year. The forecast consisted of four color palettes, including "Lush Vegetation," "Sun-Baked Earth," "Rising Tides," and "Steel and Glass." The challenge is to use one of these color palettes, and choose at least 3 colors from the palette for your submission. You may use different palettes for different projects and you can't mix colors from different palettes in a single project. Spinners may blend colors, but must save separate samples of each color to be submitted with your yarn. The Handwoven website lists the dye colors to match the palettes. Handouts of the color palettes were given out.

The topic of hosting the judging of the COE for Handweaving was discussed. We need to get on the list now to host the judging and the next available date is not until 2012-2014 (it is offered every other year). We would need volunteers to choose a location, setup the facilities, host judges, etc. Need about 12 people committed to working on this to make it happen. Expenses will be paid by HGA for room rental and actual expenses, but not for hosting. There will be 4 visiting HGA officials. Motion was made to host the COE judging with a preference for weaving; motion carried.

Rebecca Winter and Wendy Shell have a new address: 4380 N Longabaugh Way, Meridian 83646.

Nancy Swenson's email address is:
nswenson7@msn.com

Irene Chandler's email address is:
gcgreenbean@cableone.net

Color Study on Blues: lots of discussion on what is "True Blue." Color for February is Rising Tides from the Handwoven color forecast.

Puffy Mondaes is a new shop in Nampa featuring yarn and fiber. It is located at 4th and 10th Ave S. Hours are 10-6 M-Sat and Karen Brown is the owner. She is also selling handmade items.

The Gold Bag yielded 20/2 cotton provided by Rebecca.

Show & Tell included: Lynn Ruggles, sample rugs, scarf, handspun cotton bag; Mary Berent, 2nd jacket from handwoven fabric; Irene Chandler, inkle woven band with thick wool; Al Hayden, color & weave woven strip in yellow and black in 20/2 pearl cotton, larger sample for class and dyed skeins; Vila Cox, samples for diversified plain weave for the 2nd part of the COE certificate; Shirley Sterling, quiviq sample, felted bag from thrift store, handspun wolf fiber woven into squares; Mitzi Meyers, 4 scarves woven on painted silk warp and rayon chenille weft - when washed, the scarves collapsed which was not expected.

Julie Gerrard then presented a program on Twill weave.

Respectfully submitted,
Lynn Ruggles (substitute secretary)



Classified Advertisement

The Perfect Workshop Loom:

It is a Woodhouse "Julie" 16-shaft table loom. The weaving width is 16 inches, and the loom has Texsolv heddles, a back beam extension, overhead beater, and two stainless steel reeds (6 & 15). The loom folds flat for storage and/or transportation. \$500.00

Please contact Judy Dice, 208-837-6657, Hagerman, Idaho; email: pairedice@northrim.net



Garden Valley Fiber Freaks Winter Blues Spin-In

Sunday, February 17, 2008,
Crouch Community Hall
10 am - 4 p.m.

Oil your wheel and get out your fiber! It's almost time to spin away the winter blues!

The annual Garden Valley Fiber Freaks Winter Blues Spin-in will be held Sunday, February 17, 2008 at the Crouch Community Hall, 10 am - 4 p.m.. All spinners and drop-ins are welcome. Please bring a sack lunch and finger food dish to share (no crock-pots, no cooking allowed). For your convenience, soup, sandwiches and finger food items may be purchased across the street. Also bring a fiber related, wrapped white elephant gift. Bring your show and tell items. And bring news of other workshops, spin-ins and fiber conferences.

There is a suggested \$5 donation for spinners, suggested \$10 donation for vendors. Coffee, tea and hot chocolate will be provided.

Directions: From Boise take Hwy 55 north to Banks (19 miles north of Horseshoe Bend), turn right onto Hwy 17 towards Loman. Take your first left turn (9 miles up river) into the town of Crouch. Bear right when you get to the center of town. The Community Hall is next to the Trading Post and across the street from the Merc. Come early and have breakfast at one of the local restaurants. Enjoy the snow and lovely ride up, but drive carefully. For further information call Jo 462-3797, Kathy 462-8092 or Margaret 462-8014.



Study Group News

Weaving Intensive:

A Study of the Color-And-Weave Effect

The intensive was held on January 19, 20, & 21. There were 12 participants and 12 looms with wonderful warps to share. Come to the February meeting to see some of the samples made during the intensive. Truly, a good time was had by all.



Not pictured - Marlene Bean



Al Hayden brought his 24-harness Compu-dobby AVL loom to the weaving intensive and most of us enjoyed trying it out.

Spinning Study Group

The Spinning Study group will meet on February 14 at Maralyn Larson's clubhouse from 6:30-8:30 p.m.. Maralyn and Lynn have a proposal for a Spinning project, so come hear what they have in mind. The proposal includes color, dyeing, and spinning. Contact Lynn Ruggles for info or directions, 375-9172.

Certificate of Excellence (COE) Study Group

The COE (Certificate of Excellence) Study group is scheduled to meet February 1, before the regular guild meeting, at 9:30 am. We will meet at the Moxie Java Coffee Shop near the corner of Vista and Kootenai. Contact Vila or Mary for more information.



Ramblings from the President

I love winter. With the garden hidden under a layer of snow, there's time to weave, or spin, or knit. (All the activities I feel guilty about doing in the summer time.) However, after surfing the web, I realized that some other areas can have entirely too much of a good thing. I was looking for ideas for our guild challenge and found a guild in Illinois in which their challenge was to not only weave a coverlet during the year, but spin and dye the yarn for it. Can you imagine? I concluded they must have 12 months of winter!

Our guild challenge has four palettes "forecast" by Daryl Lancaster. Hopefully, one of these crystal ball palettes will appeal to you personally, and you will be inspired to spin or weave a project or several different projects for the challenge.

Many thanks to Al for chairing the Intensive Workshop this year and to Mary Berent for providing a meeting place. With a little arm twisting, Al agreed to chair the Intensive next year - Thanks Al!!!

My personal gauge of how successful a workshop has been is to count how many "Tums" I've taken. The higher the count, the more stressful or difficult the workshop was. With the count at zero, this one (the weaving intensive) was a huge success. If you were hesitant to attend this year, consider it for next year as it is a great three days of learning and camaraderie.

Marlene



Guild Officers and Chairs

President: Marlene Bean 337-3631
Vice-Presidents: Mary Berent 939-8906
Vila Cox 323-7736
Secretary: Mary Ireland
Treasurer: Cindy Schafer 375-6736
Librarian: Cindy Schafer 375-6736
Newsletter Editor: Rebecca Winter 895-0975
Weaving Study Group: Julie Gerrard 342-8562
Spinning Study Group: Lynn Ruggles 375-9172
COE Study Group: Mary Berent 939-8906
Vila Cox 323-7736

Websites

<http://www.handweavers-guild-boise.org>
<http://my.calendars.net/handweavers/>



Welcome to the Handweavers Guild of Boise Valley, Inc. The guild has been sharing its craft with the community for 35 years. Our stated purpose is to "carry on, study and foster the arts and crafts of handweaving, spinning and fiber arts." The Guild meets from September through June on the first Saturday of the month. Generally, meetings are held at 11:30 a.m. at the Adelman House at the Idaho Historical Museum in Boise. Look frequently for details in this newsletter, or please contact any member for inspiration, or for answers to your questions.



**Be the Among the First to Receive Your
Newsletter - Get It Electronically**

Contact Vila at vila@handweavers-guild-boise.org to be added to the list of those receiving their Newsletter electronically. Or call her at 323-7736

“CRYSTAL BALL COLORS”

CHALLENGE 2008

Weave or spin colors that are sure to be the latest in style from Daryl Lancaster’s “Fabric Forecast” for Spring – Summer 2008. Daryl developed four color waves based on the increasing awareness of global warming and labeled them: 1. Lush Vegetation, 2. Sun-Baked Earth, 3. Rising Tides and 4. Steel & Glass. These color palettes can be found in Handwoven Sept. – Oct. 2008, pg. 78-81.

The challenge is to select one color palette and then weave or spin an entry, using a minimum of three colors up to a maximum of six from one palette. Beads, ribbons etc. may be incorporated into the piece. The fiber, yarn, or weave structure is to be of your choice, and though Daryl would encourage the use of environmentally friendly yarns and fibers, that is not a requisite for this challenge.

Additional items could be constructed from one of the other three color palettes, but colors from different palettes cannot be combined together in one item. Each completed item is to be displayed with a label showing the color palette that was chosen for that entry.

The name and color for each of the yarns in Daryl’s samples are listed by the yarn. The companies which sell those yarns are abbreviated and are listed on pg. 81 of the article in Handwoven. You may use these yarns or any other yarns that match your chosen colors.

All entries must be entirely your own work since last September.

Registration is due by Saturday August 30th. Finished items should be turned in by September 20th.

There will be 4 categories for prizes:

Flat handwoven items – includes yardage and hemmed or fringed pieces (scarves, towel and rugs)

Handspun skeins – must include at least 80% handspun yarn.

Finished items from handspun

Fiber Arts – non-flat handwoven fabrics (including clothing) or 3-dimensional items, such as baskets. Must include 75% handspun or handwoven.

Prizes will be awarded for each category: \$50 First Place - \$35 Second Place - \$15 Third Place

Entry Fees are \$5.00 for the first entry, \$2.00 each for the second and third entry (a maximum of \$9.00). Any additional entries from the same person are free, so please enter as many pieces as you wish.

Entry Form

Name _____ Telephone Number _____

Address _____

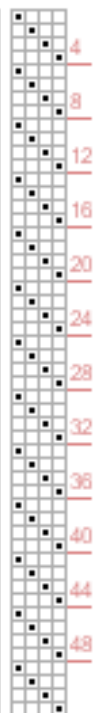
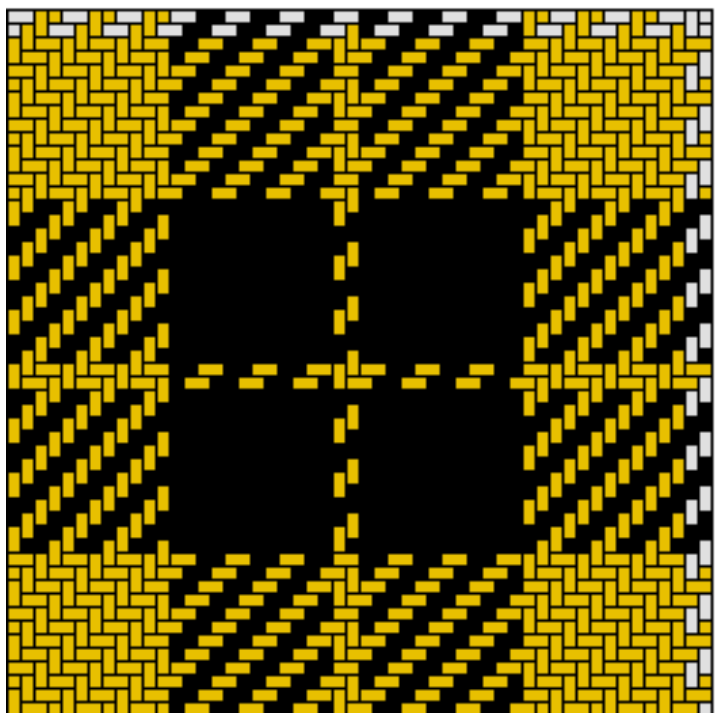
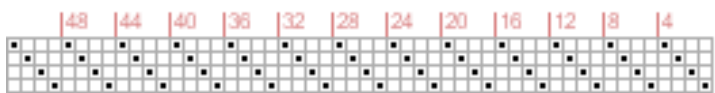
Category	Description of Piece	Fee

Submit form and entries to: Penny Schraufnagel, 2312 Pendleton Boise, ID 83705 342-1288

Drafts for Inspiration:



MacMillan



Barclay Dress

Connecting Threads
PO Box 6258
Boise ID 83707

The monthly newsletter from the



handweavers guild of boise valley, inc.

Newsletter Highlights and Please Remembers:

Dues are \$25.00. Come join us!!

Color Code for February: ["Rising Tides"](#)

Handweavers' Guild of Boise Valley, Board Meeting
March 1, 2008. All members are invited to attend

