

# Connecting Threads

Handweavers Guild of Boise Valley

June, 2009

## Calendar of Events:

June 6, 2008 - Guild Meeting - 11:30 am  
- Spring Luncheon, High Tea and  
Linen Towel Exchange  
- At the home of Mary Ireland, Homedale

Look for summer opportunities under  
Study Group News on page 4.

August 29, 2009 - Guild Meeting - Boise Historical  
Museum - Adelman House  
11:30 am - Business Meeting  
12 noon - Social time  
1:00 p.m. Program - To be Announced

September 26, 2008 - Museum Comes to Life  
Challenge Show - Adelman House  
Entry Deadline - September 12  
Turn in items by September 19

## June Program--Linen Towel Exchange

The Handweaver's Guild of Boise will host a High Tea, Potluck and Linen Towel Exchange at the regularly scheduled meeting in June, 2009.

For your towel we ask that you use linen as a thread in either warp, weft or both. Suggested sizes are 17" by 30" for a linen tea towel or 16" by 32" for a hand towel. Please bring your towel gift-wrapped.

✂ Directions to Mary Ireland's house -- Take Exit 33A (toward Marsing) from I-84 and follow SH 55 west to Marsing. Once you have crossed the Marsing bridge you will take the second street to the right (Old Brunneau Highway). Go about a half mile (?) north on Old Brunneau Highway to the second road on the right - Red Rock Road. There is a sign on the highway marking Red Rock Rd. As you come down Red Rock Rd. look off to the left. We are the first house on the road by the pond - gray/blue house, shop and barn with a white board fence. If you have any questions, please call 896-4833.

## Challenge 2009

### **What Can You Do With Monochromatic?**

Julie Gerrard, Chair

You have just a few more months to complete your entries for the 2009 Challenge, *What Can You Do with Monochromatic?* I hope that all of you have been working on weaving, spinning, and creating some fabulous items for the Challenge which is to select one color on the color wheel going from dark to light or light to dark with at least three changes to the color. The deadline to enter is Saturday, September 12 and finished items should be turned by September 19. The flyer and entry form are on pages 6 & 7 of this newsletter. If you have any questions, please feel free to contact me or any of the Challenge Committee members (Vila Cox, Mitzi Meyers, Penny Schraufnagel, and Rebecca Winter).

## Volunteers Needed for Museum Comes to Life

Julie Gerrard, Chair

I will bring the sign up sheet for Museum Comes to Life to the June meeting (picnic) which will be at Mary Ireland's home. Please consider helping with the event on Saturday, September 26. Also, if you are interested in helping, we will be setting up the display sometime in the afternoon on Friday, September 25. If you volunteer to help set up, I will let you know when and where. If you have any questions, please feel free to call me at 342-8562 or send me an email at [jgerrard4@mail.com](mailto:jgerrard4@mail.com). Thank you!



## Deciphering the Color Code



Let's look at color a little differently for the June guild meeting. Let's look at what you would consider to be a color "disaster." What I mean is that you bring in some of your weaving

or spinning, dyeing or fiber arts items that you consider to be color disasters - for whatever reason, the final project did not turn out the way you wanted color-wise. Bring it in and let's see if we can figure out as a group what happened and what could possibly be done to correct the "disaster." I know I sometimes end up weaving "mud", and would find it helpful to get some "disaster" relief for my color choices! --Jean

## Guild Meeting Minutes

May 2, 2009

The meeting was called to order by President Al Hayden. Members present: Vila Cox, Irene Chandler, Marlene Bean, Rebecca Winter, Penny Schraufnagel, Pat Ann, Julie Gerrard, Carolyn Dade, Kathy McGowen, Mitzi Meyer, Lynn Ruggles, Ivy DeHart, Marita Turner, Cece Stricklin, Mary Berent, Nancy Swenson, Yvonne Anderson and Leslie Ray.

**Vice President Report** - Marlene talked about next month's Tea Towel Exchange and Potluck. This will be held at the home of Mary Ireland in Marsing, Idaho, and there will be directions to her home in the newsletter.

**Treasurer's Report** - The Guild has \$3208.49 in the bank checking account. A number of expenses were reviewed with the members.

**Membership Report.** Penny reported that we have 39 members to date. Dues will be due by June and they will continue at \$25.00.

**Website** - Vila asked members to send her any ideas they might have for the newsletter.

**Challenge** - Julie mentioned the theme again - Monochromatic. The Museum Comes to Life will

be in September and she is still in need of volunteers. She has sign up sheets available.

The safety issues with the walkway in to the Adelman House was discussed and Mary Berent will take our concerns to the Museum.

### **Announcements:**

**Spin Study Group** - Lynn said the last spin group would meet on May 14 at Maralyn Larson's club house and then adjourn for the summer. If anyone would like to have a summer Spin-In, contact Lynn Ruggles.

**Library** - Pat Ann showed the newly acquired book, Intentional Spinning by Judith McKenzie McKuan, and also a CD by Laura Fry. The library also acquired a weaving book, Shaker Towels.

**ANWG 2013** - Rebecca talked about correspondence that she had received about the 2013 ANWG. The Boise Convention and Visitors Bureau was looking into having it, but after much discussion the Board decided it wasn't feasible because of the limited membership, and the fact that we will be hosting the 2014 COE judging. It was mentioned that we should work on building our membership before taking on such a large event.

**Day Study Group** - A new Day Study Group for Weaving was discussed, and as there is a lot of interest there will be an organizing meeting on May 19<sup>th</sup> at 1:00 p.m. at Rebecca Winter's home. She will be e-mailing all who are interested.



**COE Study Group** - The next COE meeting will be in June, and for convenience, will be held at the home of Mary Ireland in Marsing, before the June meeting at 10:00 a.m.

**Color Study** - Lavender is the color for this month and a number of great examples were brought by members.

**The Gold Bag** was passed on, this time from Al Hayden to Penny Schraufnagel.

**Teaching Opportunity** - Lynn announced that she will be teaching a class at the next Convergence in 2010, in Albuquerque on Wool Combs. Congratulations to Lynn!!!

### Show & Tell:

Lynn showed a wonderful Crazy Quilt that was given to her on a recent trip. It was made by her grandmother. Mitzi announced that she has her Challenge entry already done. Mary Berent showed the Color and Weave samples that she did for a Complex Weaver's exchange. Vila Cox has been busy using her Kumihumo to make lovely necklaces. Penny Schraufnagel talked about the Emergency Preparedness Fair coming up on May 30<sup>th</sup>. Pat Ann mentioned an Art Fair to be held in Vale on May 30. Nancy Swenson showed some wool she has been playing with, some she had dyed and some she had blended. Marita showed her knitted hat that she will be felting.

The meeting was adjourned and the membership then shopped at the annual Yarn and Equipment sale.

♥ Respectfully submitted, Mary Ireland, Secretary

## Guild Officers and Chairs

President: Al Hayden 343-7300  
Vice-presidents: Cece Stricklin 387-2641  
Kathy McGowan 939-7215  
Secretary: Cynthia Newman 541-523-2451  
Treasurer: Irene Chandler 467-4997  
Membership Officer: Penny Schraufnagel 342-1288  
Librarian: Pat Ann 452-3181  
Newsletter Editor: Rebecca Winter 895-0975  
Weaving Study Group: Julie Gerrard 342-8562  
Weaving Intensive Study Group: Al Hayden  
Spinning Study Group: Lynn Ruggles 375-9172  
COE Study Group: Mary Berent 939-8906  
Day Weaving Study Group: Rebecca Winter  
Web Master: Vila Cox 323-7736

## Websites

<http://www.handweavers-guild-boise.org>

<http://my.calendars.net/handweavers/>



## Ramblings from the President

With the high temperature of today (Monday the 18<sup>th</sup>) comes the realization the summer is soon upon us.

June's picnic at Mary Ireland's home is the last meeting of the guild year and the last before summer. It is also the time that the guild officers pass on their responsibilities to another group of volunteer workers.

Does your weaving go into a slow down with all of the other activities that summer brings? Or is it a welcome respite from the higher temperatures? Just remember that the Challenge is very soon after we come back in the fall.

Despite a very full personal schedule the next several weeks, I am looking forward to spend more time at the loom this summer. I am also planning on rearranging my study, with the air conditioning going, no doubt.

Looking forward to seeing you all at Mary's, but if you are not able to attend have a great summer and we will meet again on the 29<sup>th</sup> of August. -- Al

## Classified Advertisement



For Sale - Custom built spinning chair made out of maple - \$45.00 or best offer. Can be seen at the June meeting/potluck or call Mary Ireland at 896-4833.

## Study Group News

### Certificate of Excellence (COE) Study Group

The COE study group will meet next on Saturday, June 6, at 10:00 a.m., at the home of Mary Ireland. All are welcome to participate. Call Mary Berent for more info. at 939-8906.



### Spinning Study Group

We have 3 spinning Saturday's scheduled for this summer:

June 20, Lynn Ruggles, Boise

July 18, Mitzi Meyers, Sweet

August 15, Penny Schraufnagel, Boise

We meet from 10-3 and have a potluck lunch. I will be posting driving directions on the Yahoo group about a week before each event as well as sending out individual emails. If you aren't sure you are on my email-spinning list, let me know and I will add your name. Contact Lynn for more info, 375-9172.

### Day Weaving Study Group

The Day Weaving Group met and decided upon a plan of action. Each participant will choose and study according to their own plan. We all have an idea of what we want to pursue and the group setting gives us the perfect forum and deadline system to accomplish our goals.

If this is something you are interested in as well, come join us for the following meetings. We plan to meet over the summer and continue into the Fall. We decided to continue with the third Tuesday at 1 p.m., and will meet at members' homes.

June 16, at the home of Vila Cox

July 21, at the home of Irene Chandler

August 18, at the home of Mary Berent



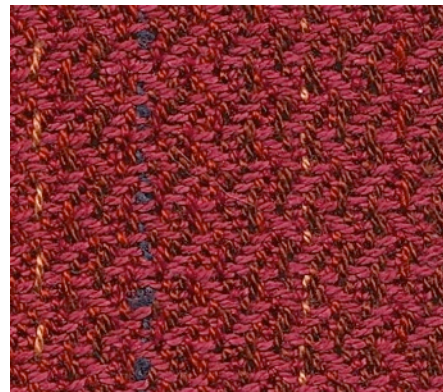
### Sample Exchange

Remember to pull your samples from the Sample Exchange Box at each regular Guild meeting. **And** remember to check your name off the list in each file folder.

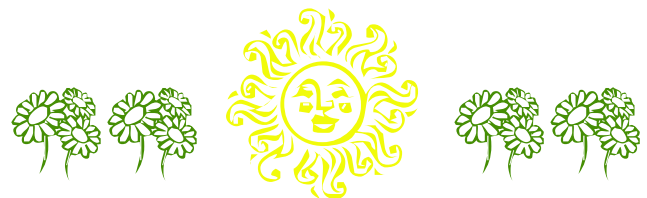
The sample shown below will be available to members at the June meeting.

If you are unable to attend the regular meetings and would like to receive your samples, you may send SASE to the sample chair and she will send out your sample each month. One member sent several envelopes and they are on file in the Sample Box.

If you would like participate or have questions, contact the Sample Chair, Rebecca Winter



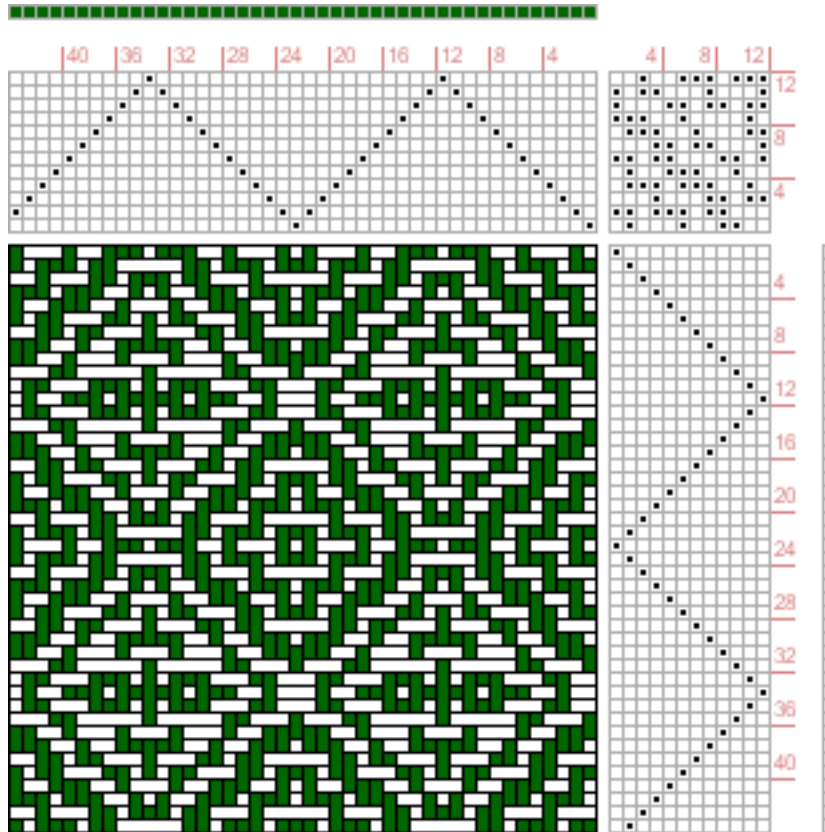
Sample woven by Mary Ireland  
8 harness twill  
Warp - 10/2  
tencel and  
a boucle  
Weft - 10/2  
dyed tencel  
Sett - 24 epi



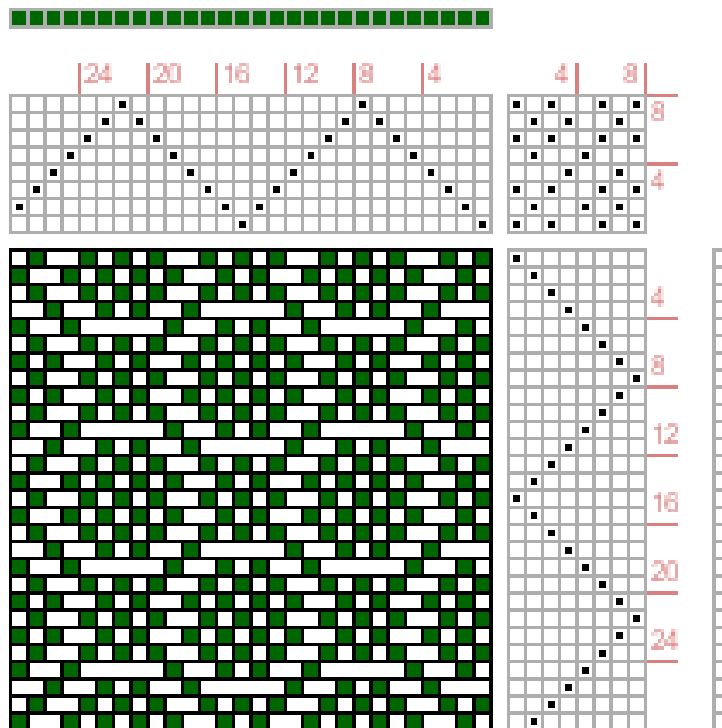
## Draft Inspiration

The following drafts are from <http://www.handweaving.net> You can go there and enter the number to see all the specifics about each draft, as well as download a .wif file.

Draft #18104



Draft #34713



## What Can You Do With **MONOCHROMATIC**? CHALLENGE 2009

What is monochromatic?

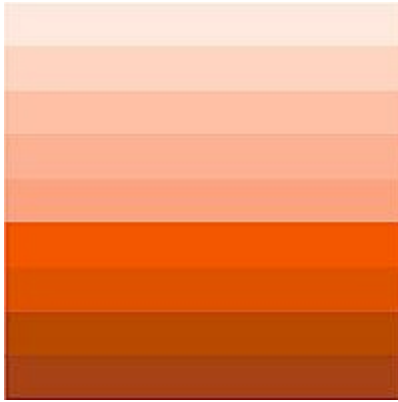
From Merriam-Webster dictionary -Pronunciation: \ , mā-nə-krō- ' ma-tik\

Function: *adjective*. Etymology: Latin *monochromatos*, from Greek *monochrōmatos*, from *mon-* + *chrōmat-*, *chrōma* color. Date: 1822

1 **a**: having or consisting of one color or hue **b**: **MONOCHROME** 22: consisting of radiation of a single wavelength or of a very small range of wavelengths 3: of, relating to, or exhibiting **monochromatism** 4: lacking variety, creativity, or excitement : **COLOR-LESS**

### **Monochromatic color - From Wikipedia, the free encyclopedia**

Monochromatic colors are all the colors (tints, tones and shades) of a single hue.



Monochromatic color schemes are derived from a single base hue, and extended using its shades, tones and tints (that is, a hue modified by the addition of black, gray (black + white) and white). As a result, the energy is more subtle and peaceful due to a lack of contrast of hue. Monochromatic color schemes may be considered boring unless there is diversity within the design.

Example of Monochromatic color

The challenge is to select one color on the color wheel and create an exciting woven piece, skein of yarn, or fiber art. Going from dark to light or light to dark, you must have a progression of at least three changes to the color when creating your masterpiece.

This is an excellent opportunity to play with one color and see where it takes you. Weavers, if you are more of a structure person than a color person, it's time to step out of your comfort zone, pick a color, and go for it. Spinners, you could create a luscious variegated yarn that could win you big bucks at Museum Comes to Life. Or, push that envelope even further, and take your flat handwoven item or skein of yarn and turn it into fiber art.

All entries must be entirely your own work since last September.

Registration is due by Saturday September 16th. Finished items should be turned in by September 20th.

There will be 4 categories for prizes:

1. Flat handwoven items – includes yardage and hemmed or fringed pieces (scarves, towel and rugs)
2. Handspun skeins – must include at least 80% handspun yarn.
3. Finished items from handspun
4. Fiber Arts – non-flat handwoven fabrics (including clothing) or 3-dimensional items, such as baskets. Must include 75% handspun or handwoven.

Prizes will be awarded for each category: \$50 First Place - \$35 Second Place - \$15 Third Place  
Entry Fees are \$5.00 for the first entry, \$2.00 each for the second and third entry (a maximum of \$9.00). Any additional entries from the same person are free, so please enter as many pieces as you wish.

### Entry Form

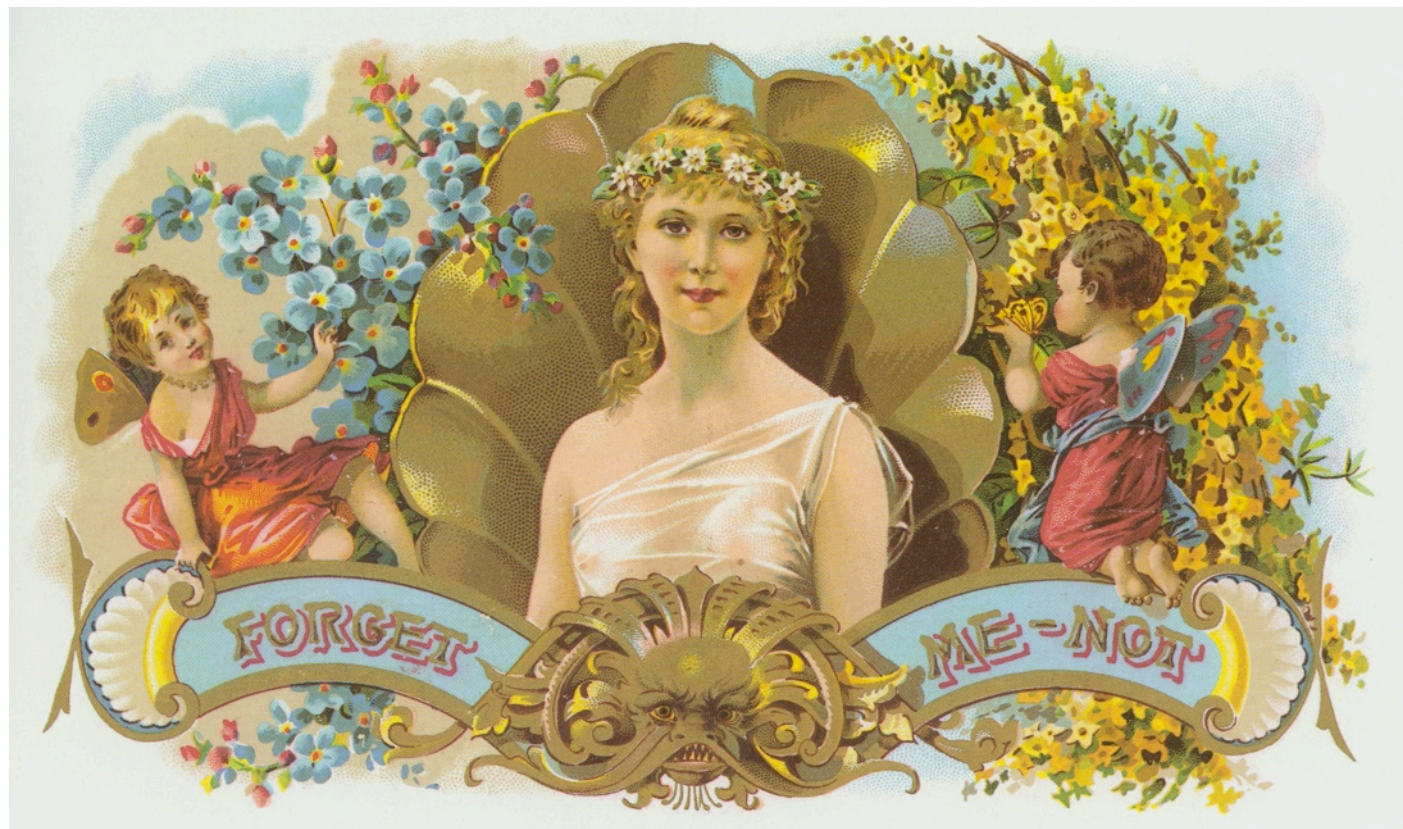
Name \_\_\_\_\_ Telephone Number \_\_\_\_\_

E-Mail Address \_\_\_\_\_

Address \_\_\_\_\_

Category	Description of Piece	Fee

Submit form and entries to: Julie Gerrard, 2020 Mortimer Court, Boise, ID 83705 342-8562



Connecting Threads  
PO Box 6258  
Boise ID 83707

The monthly newsletter from the



handweavers guild of boise valley, inc.

## June Newsletter Highlights and Please Remembers:

- ☀ **June Program: High Tea, Potluck and Linen Towel Exchange**
- ☀ **Color Code: "Disaster" Relief**
- ☀ **Dues are Due Now - Plan to join again for wonderful fiber learning opportunities!**

